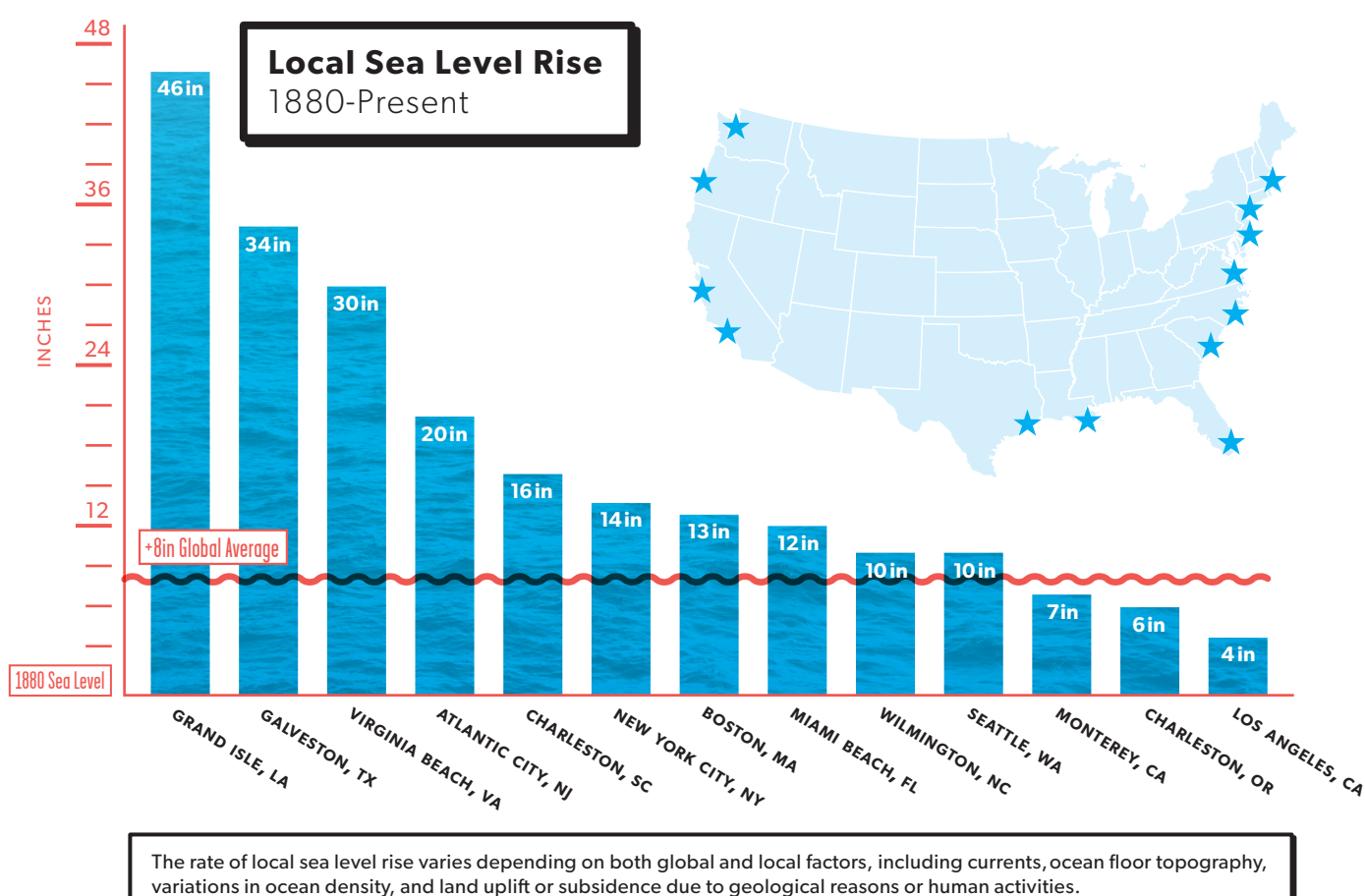


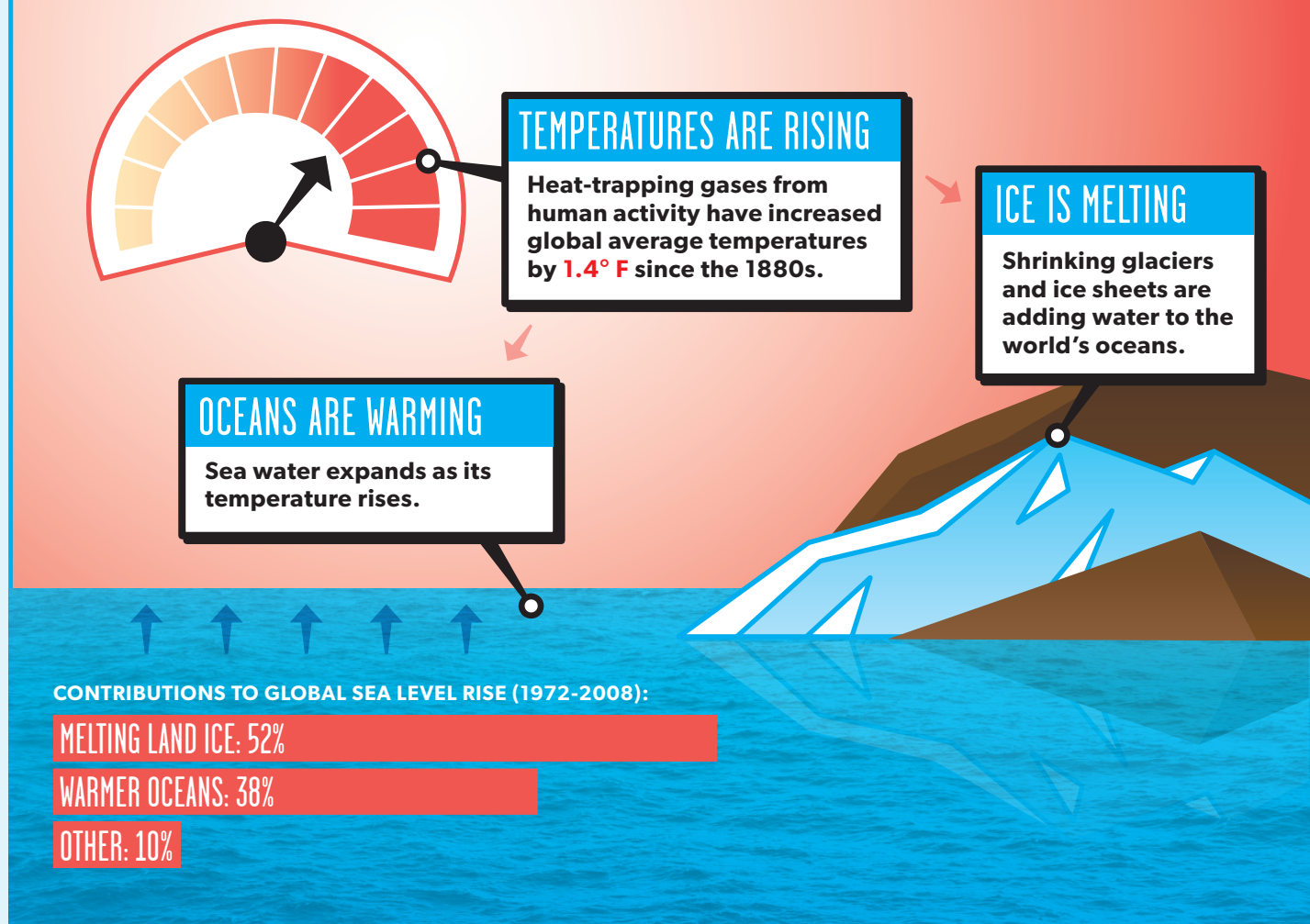
## FACT 1

Global average sea level has increased 8 inches since 1880. Sea levels along the U.S. East Coast and Gulf of Mexico are rising **much faster**.



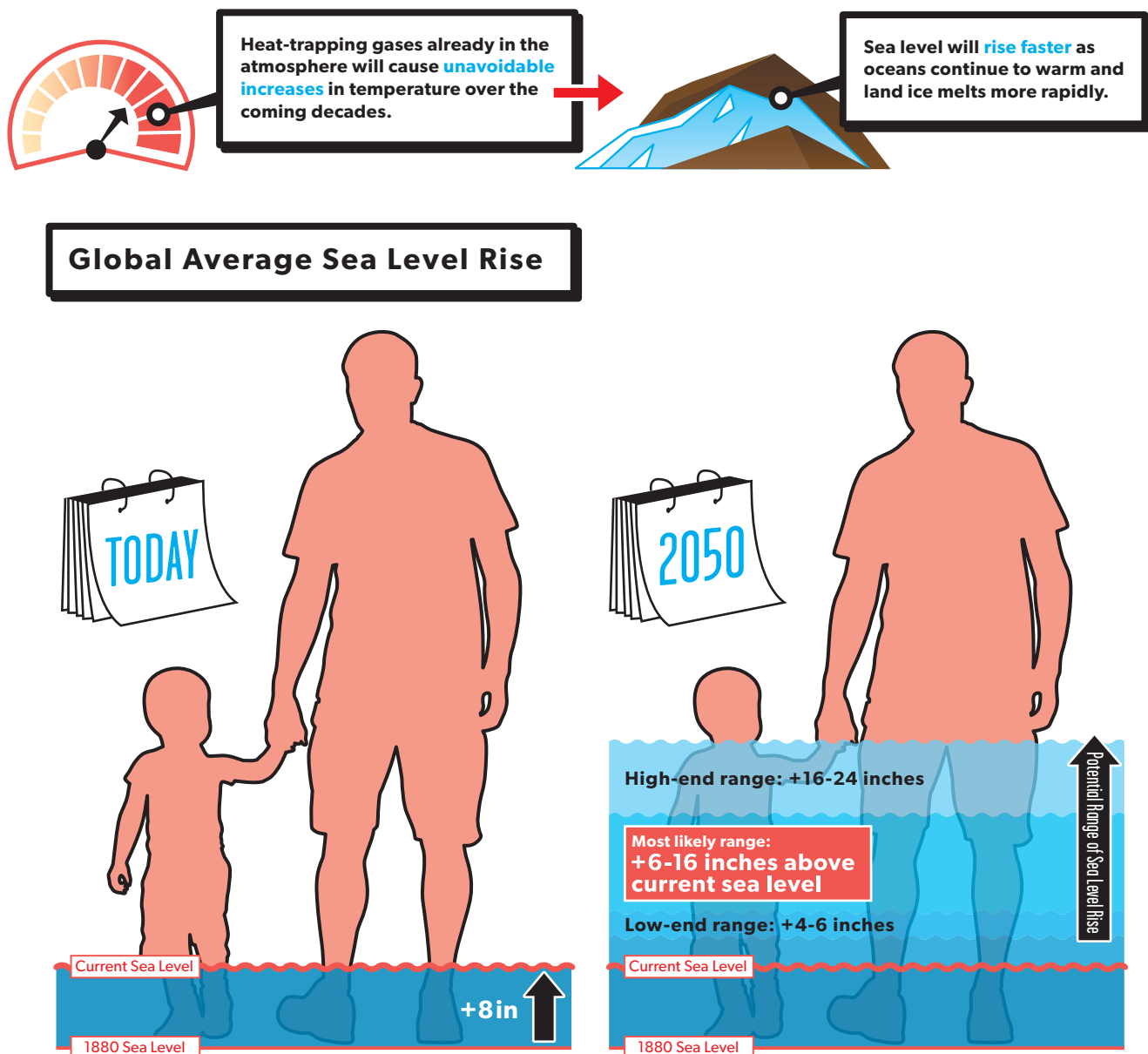
## FACT 2

Global warming is the **primary cause** of current sea level rise.



## FACT 3

Sea level rise is **accelerating**.



## FACT 4

The choices we make **today** will determine how high sea level rises this century, how fast it occurs, and how much time we have to protect our communities.

